

METEOROLOGICAL DEPARTMENT CURAÇAO CLIMATOLOGICAL SUMMARY

Week 43

Week Starting:	24-Oct	2016
Week Ending:	30-Oct	2016

Station: HATO, Airport

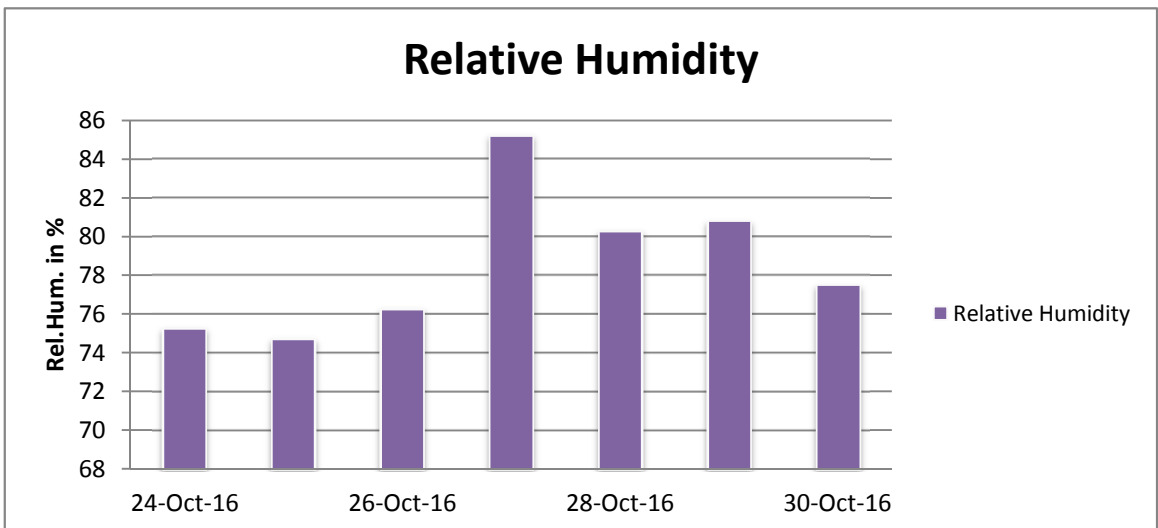
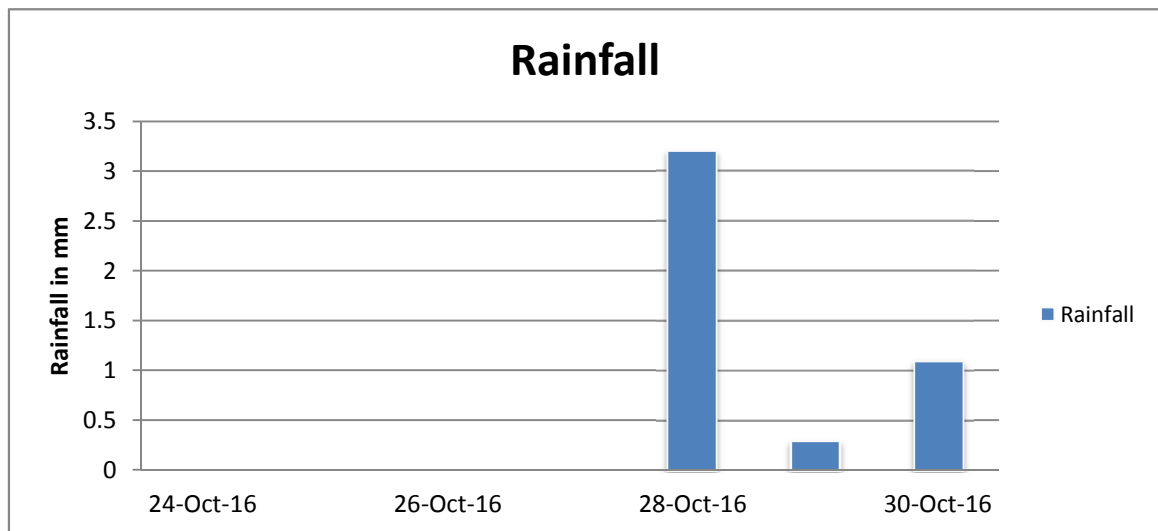
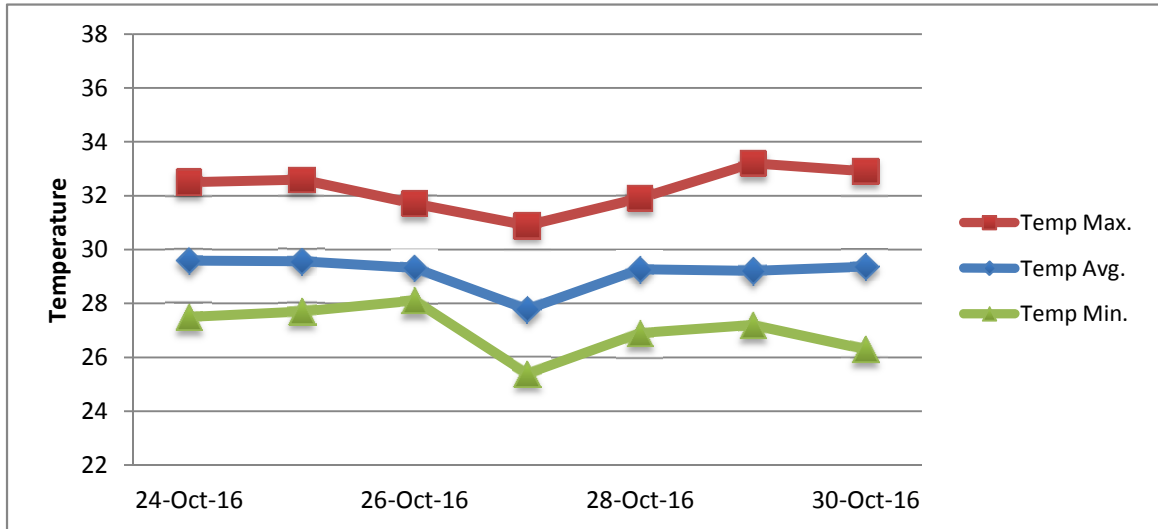
RAIN			DATE	TIME
Rainfall total	4.6	mm	-	-
Rainfall 24 hour's maximum	3.2	mm	28-Oct-16	-
Rainfall amount of days >= 1.0 mm	2		-	-
Rainfall cumulative	152.6	mm	-	-
TEMPERATURE				
Temperature weekly average	29.2	°C	-	-
Temperature weekly max. average	32.2	°C	-	-
Temperature absolute max.	33.2	°C	29-Oct-16	14:11
Temperature weekly min. average	27.0	°C	-	-
Temperature absolute min.	25.4	°C	27-Oct-16	10:43
Relative humidity weekly average	78.6	%	-	-
WIND				
Wind speed weekly average	8.2	kts	-	-
Wind speed average max.	17.3	kts	-	-
Wind speed absolute max.	20	kts	29-Oct-16	9:25
Wind vector weekly average	262	°	-	-
Wind energy potential total *	7,169	KWhr / m ²	-	-
Wind energy weekly average *	1024	Whr / m ² /day	-	-
Wind energy potential maximum *	1815	Whr / m ² /day	29-Oct-16	-
Wind energy potential minimum *	97	Whr / m ² /day	27-Oct-16	-
EVAPORATION				
Evaporation daily average	6.48	mm	-	-
Evaporation weekly total	45.38	mm	-	-
Evaporation maximum	10.54	mm	26-Oct-16	-
SUNSHINE				
Sunshine duration weekly average	9 hrs	36 min	-	-
Sunshine absolute max.	10 hrs	48 min	25-Oct-16	-
Sunshine absolute min.	5 hrs	48 min	27-Oct-16	-
Solar radiation weekly average	4703	Whr / m ² /day	-	-
Solar radiation absolute max.	6378	Whr / m ² /day	-	-
Solar radiation absolute min.	3025	Whr / m ² /day	-	-
REMARKS				

* Wind energy at a height of 10 m for windspeeds of 4 m/s or more.

_ Blank field - No data available



METEOROLOGICAL DEPARTMENT CURAÇAO CLIMATOLOGICAL SUMMARY



METEOROLOGICAL DEPARTMENT CURAÇAO CLIMATOLOGICAL SUMMARY

