

METEOROLOGICAL DEPARTMENT CURAÇAO CLIMATOLOGICAL SUMMARY

Week 37

Week Starting:	12-Sep	2016
Week Ending:	18-Sep	2016

Station: HATO, Airport

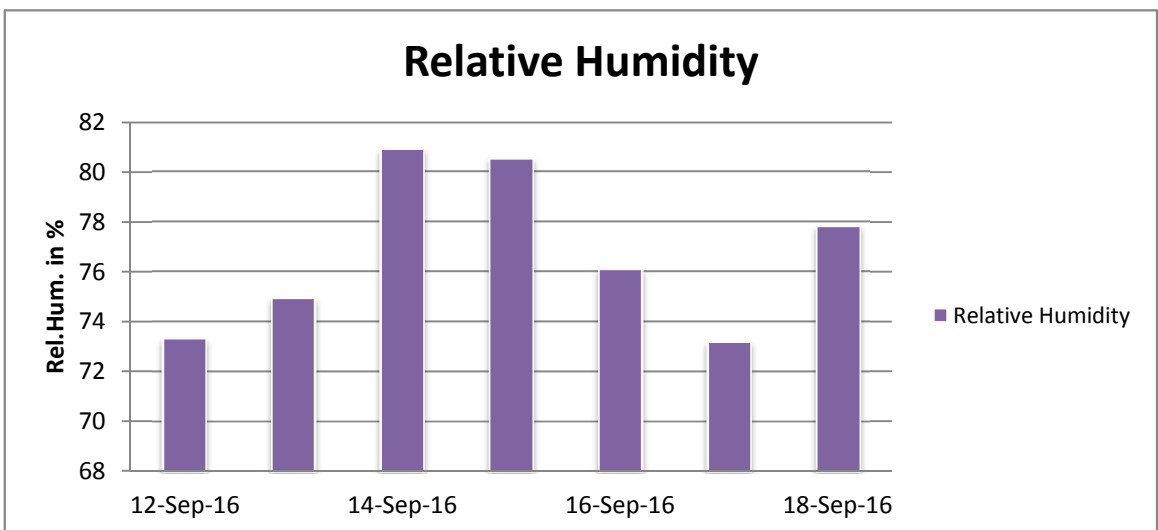
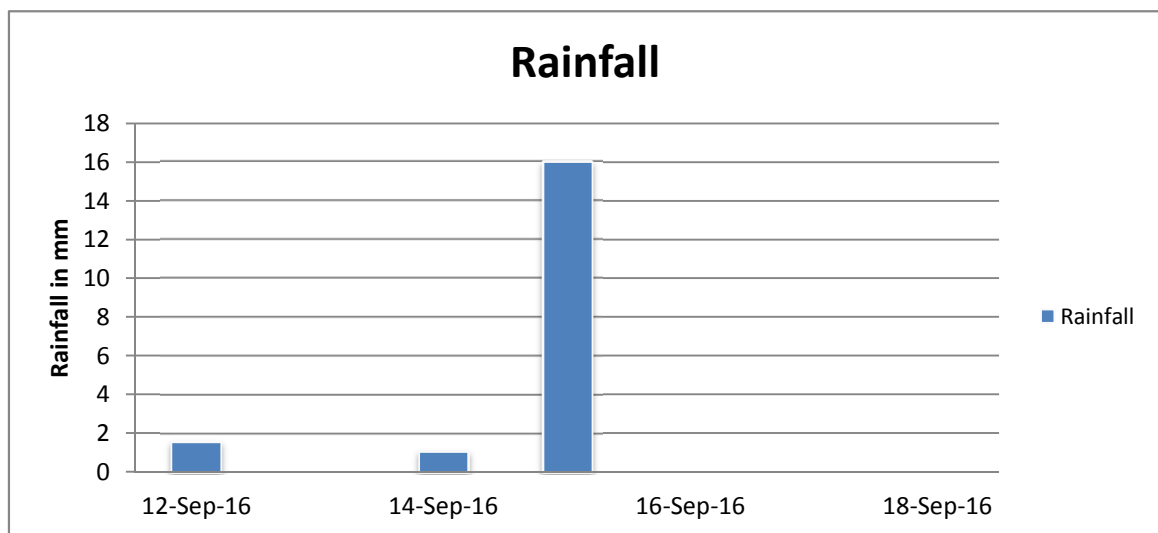
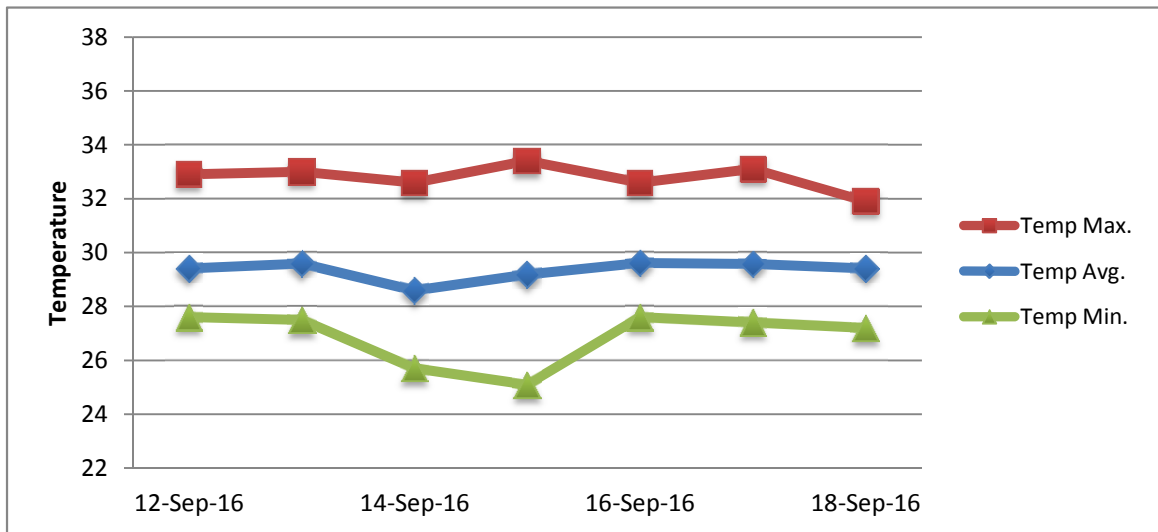
RAIN			DATE	TIME
Rainfall total	18.7	mm	-	-
Rainfall 24 hour's maximum	16.0	mm	15-Sep-16	-
Rainfall amount of days >= 1.0 mm	3		-	-
Rainfall cumulative	101.4	mm	-	-
TEMPERATURE				
Temperature weekly average	29.3	°C	-	-
Temperature weekly max. average	32.8	°C	-	-
Temperature absolute max.	33.4	°C	15-Sep-16	11:21
Temperature weekly min. average	26.9	°C	-	-
Temperature absolute min.	25.1	°C	15-Sep-16	7:59
Relative humidity weekly average	76.7	%	-	-
WIND				
Wind speed weekly average	11.1	kts	-	-
Wind speed average max.	22.6	kts	-	-
Wind speed absolute max.	28	kts	14-Sep-16	12:46
Wind vector weekly average	269	°	-	-
Wind energy potential total *	20,590	KWhr / m ²	-	-
Wind energy weekly average *	2941	Whr / m ² /day	-	-
Wind energy potential maximum *	5127	Whr / m ² /day	18-Sep-16	-
Wind energy potential minimum *	1525	Whr / m ² /day	14-Sep-16	-
EVAPORATION				
Evaporation daily average	7.52	mm	-	-
Evaporation weekly total	52.64	mm	-	-
Evaporation maximum	9.67	mm	14-Sep-16	-
SUNSHINE				
Sunshine duration weekly average	9 hrs	34 min	-	-
Sunshine absolute max.	11 hrs	0 min	16-Sep-16	-
Sunshine absolute min.	5 hrs	18 min	14-Sep-16	-
Solar radiation weekly average	5385	Whr / m ² /day	-	-
Solar radiation absolute max.	6099	Whr / m ² /day	-	-
Solar radiation absolute min.	3781	Whr / m ² /day	-	-
REMARKS				

* Wind energy at a height of 10 m for windspeeds of 4 m/s or more.

_ Blank field - No data available



METEOROLOGICAL DEPARTMENT CURAÇAO CLIMATOLOGICAL SUMMARY



METEOROLOGICAL DEPARTMENT CURAÇAO CLIMATOLOGICAL SUMMARY

