

METEOROLOGICAL DEPARTMENT CURAÇAO CLIMATOLOGICAL SUMMARY

Week 34

Week Starting:	22-Aug	2016
Week Ending:	28-Aug	2016

Station: HATO, Airport

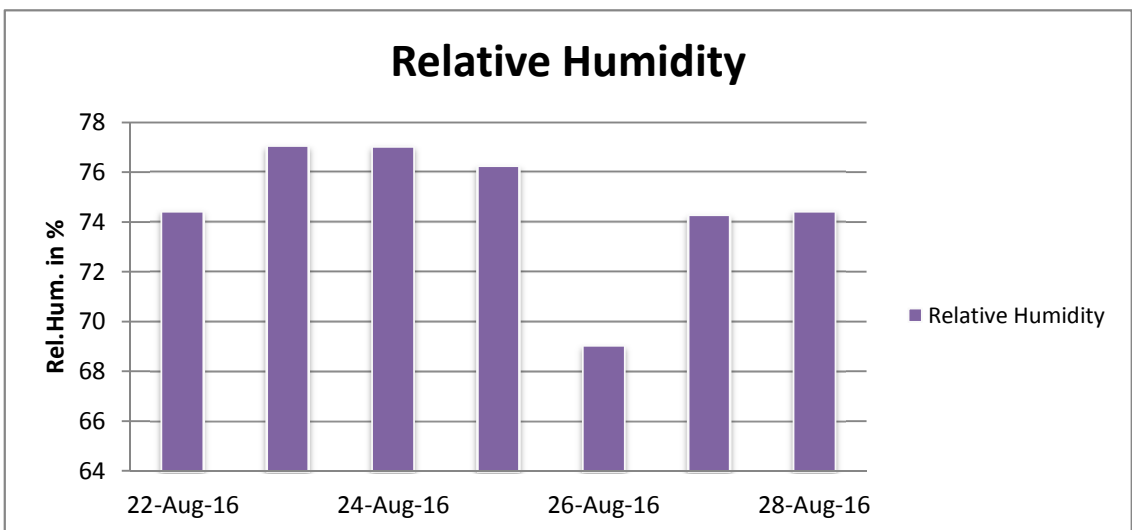
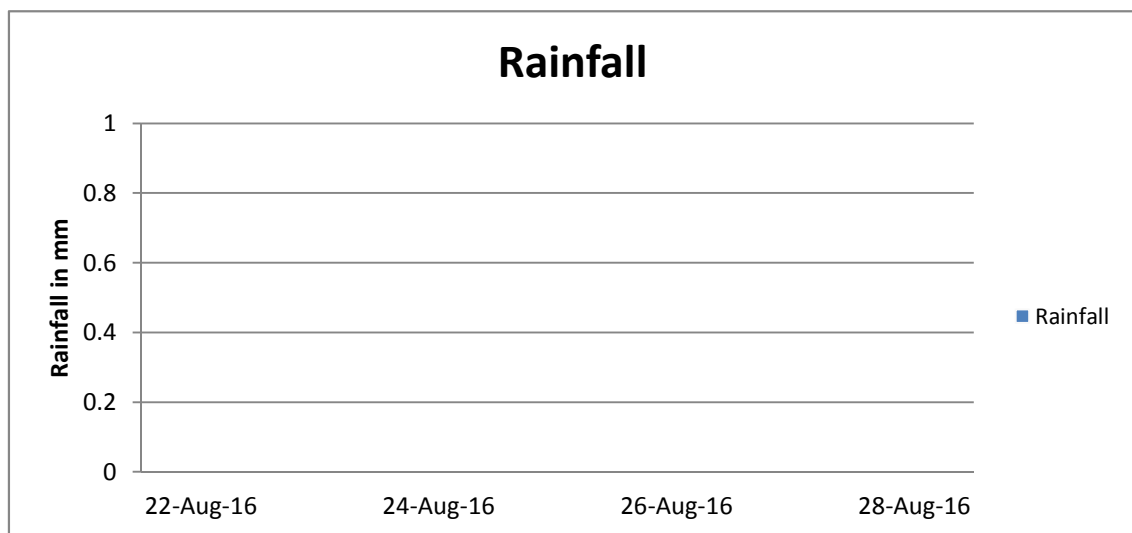
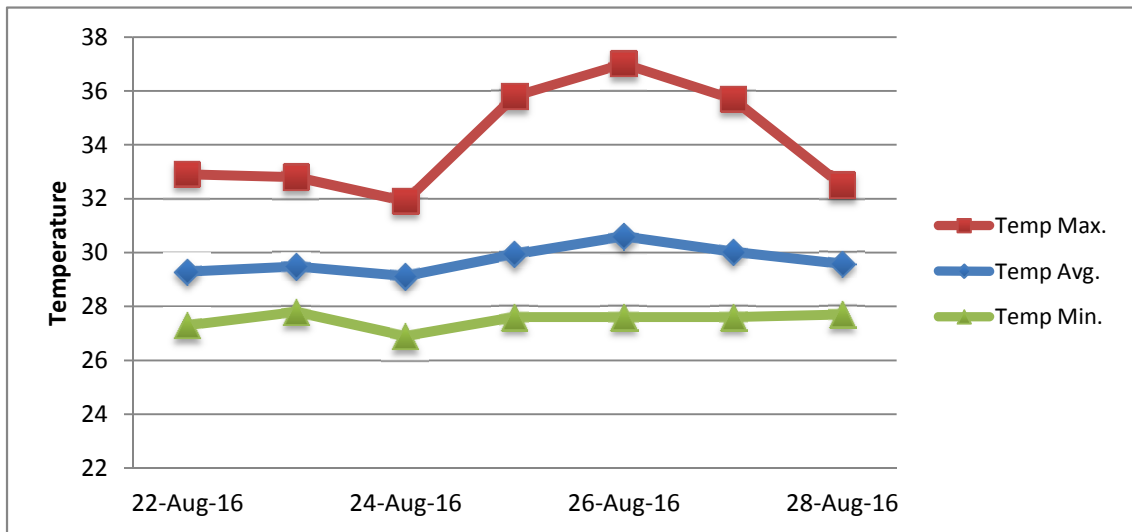
RAIN			DATE	TIME
Rainfall total	0.0	mm	-	-
Rainfall 24 hour's maximum	0.0	mm	-	-
Rainfall amount of days >= 1.0 mm	-		-	-
Rainfall cumulative	62.9	mm	-	-
TEMPERATURE				
Temperature weekly average	29.7	°C	-	-
Temperature weekly max. average	34.1	°C	-	-
Temperature absolute max.	37.0	°C	26-Aug-16	13:22
Temperature weekly min. average	27.5	°C	-	-
Temperature absolute min.	26.9	°C	24-Aug-16	2:58
Relative humidity weekly average	74.6	%	-	-
WIND				
Wind speed weekly average	12.1	kts	-	-
Wind speed average max.	24.0	kts	-	-
Wind speed absolute max.	28	kts	26-Aug-16	11:15
Wind vector weekly average	93	°	-	-
Wind energy potential total *	25,997	KWhr / m ²	-	-
Wind energy weekly average *	3714	Whr / m ² / day	-	-
Wind energy potential maximum *	4693	Whr / m ² / day	26-Aug-16	-
Wind energy potential minimum *	2674	Whr / m ² / day	24-Aug-16	-
EVAPORATION				
Evaporation daily average	8.22	mm	-	-
Evaporation weekly total	57.51	mm	-	-
Evaporation maximum	10.83	mm	28-Aug-16	-
SUNSHINE				
Sunshine duration weekly average	10 hrs	33 min	-	-
Sunshine absolute max.	11 hrs	6 min	27-Aug-16	-
Sunshine absolute min.	9 hrs	54 min	24-Aug-16	-
Solar radiation weekly average	5835	Whr / m ² / day	-	-
Solar radiation absolute max.	6979	Whr / m ² / day	-	-
Solar radiation absolute min.	4150	Whr / m ² / day	-	-
REMARKS				

* Wind energy at a height of 10 m for windspeeds of 4 m/s or more.

_ Blank field - No data available



METEOROLOGICAL DEPARTMENT CURAÇAO CLIMATOLOGICAL SUMMARY



METEOROLOGICAL DEPARTMENT CURAÇAO CLIMATOLOGICAL SUMMARY

