

METEOROLOGICAL DEPARTMENT CURAÇAO CLIMATOLOGICAL SUMMARY

Week 15

Week Starting:	11-Apr	2016
Week Ending:	17-Apr	2016

Station: HATO, Airport

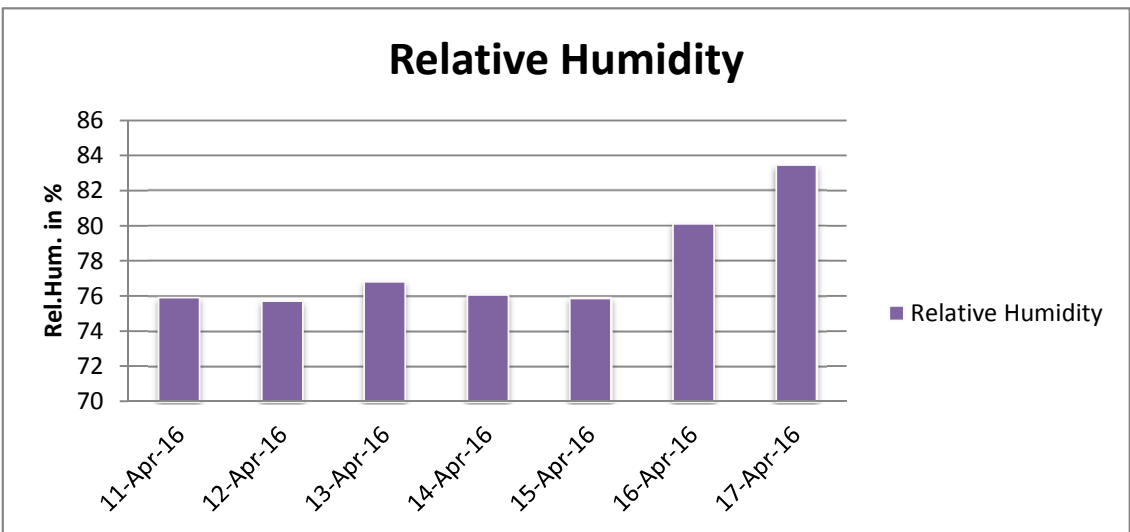
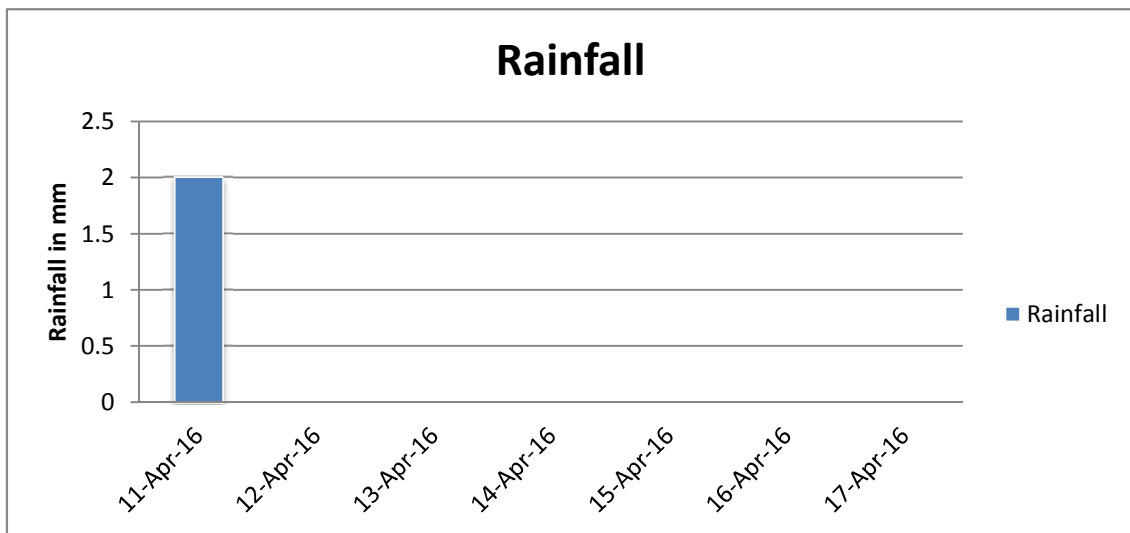
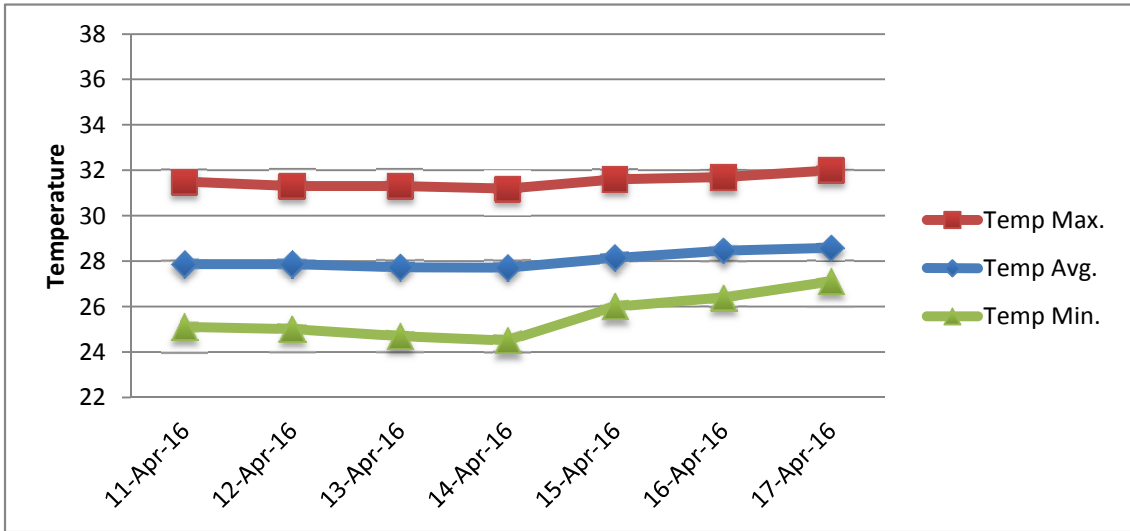
RAIN			DATE	TIME
Rainfall total	2.0	mm	-	-
Rainfall 24 hour's maximum	2.0	mm	11-Apr-16	-
Rainfall amount of days >= 1.0 mm	1		-	-
Rainfall cumulative	19.3	mm	-	-
TEMPERATURE				
Temperature weekly average	28.1	°C	-	-
Temperature weekly max. average	31.5	°C	-	-
Temperature absolute max.	32.0	°C	17-Apr-16	13:15
Temperature weekly min. average	25.5	°C	-	-
Temperature absolute min.	24.5	°C	14-Apr-16	6:15
Relative humidity weekly average	77.7	%	-	-
WIND				
Wind speed weekly average	9.8	kts	-	-
Wind speed average max.	19.0	kts	-	-
Wind speed absolute max.	23	kts	17-Apr-16	20:11
Wind vector weekly average	265	°	-	-
Wind energy potential total *	13,620	KWhr / m ²	-	-
Wind energy weekly average *	1946	Whr / m ² /day	-	-
Wind energy potential maximum *	3253	Whr / m ² /day	17-Apr-16	-
Wind energy potential minimum *	853	Whr / m ² /day	13-Apr-16	-
EVAPORATION				
Evaporation daily average	9.77	mm	-	-
Evaporation weekly total	68.42	mm	-	-
Evaporation maximum	10.82	mm	17-Apr-16	-
SUNSHINE				
Sunshine duration weekly average	10 hrs	28 min	-	-
Sunshine absolute max.	11 hrs	6 min	13-Apr-16	-
Sunshine absolute min.	8 hrs	6 min	17-Apr-16	-
Solar radiation weekly average	6744	Whr / m ² /day	-	-
Solar radiation absolute max.	7961	Whr / m ² /day	-	-
Solar radiation absolute min.	5456	Whr / m ² /day	-	-
REMARKS				

* Wind energy at a height of 10 m for windspeeds of 4 m/s or more.

_ Blank field - No data available



METEOROLOGICAL DEPARTMENT CURAÇAO CLIMATOLOGICAL SUMMARY



METEOROLOGICAL DEPARTMENT CURAÇAO CLIMATOLOGICAL SUMMARY

